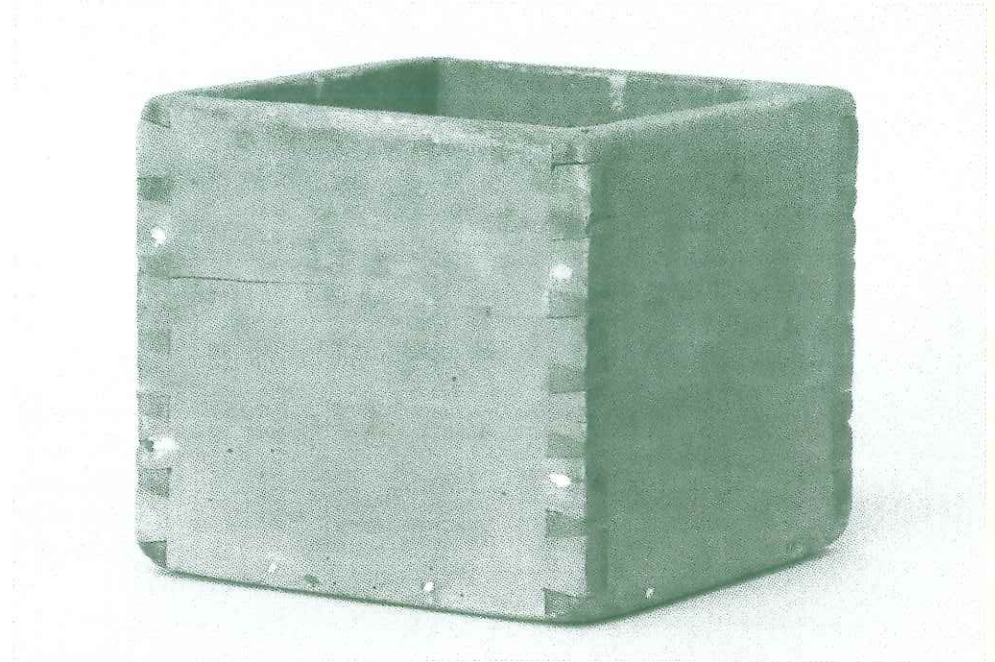


East Bradford Worldly Goods IX

Strode's Mill Tithe Box



Strode's Mill, at the intersection of Lenape and Birmingham Roads, was erected in 1721 by John Willis, Samuel Scott, and George Carter, who were English landowners in Bradford Township. The stone mill was first noted in George Carter's 1722 will as a corn water mill. The first recorded Miller was George Entriiken, who emigrated from Ireland and in time saved funds to purchase Strode's Mill and later acquire a large farmstead now known as Tigue Farm. George Entriiken owned the mill and prospered until the 1780's.

The Strode's Mill Tithe Box, now part of the permanent collection of the Chester County Historical Society, most likely was used by George Entriiken. The box was carefully crafted with dovetail joints and measures seven inches square and stands almost six inches in height.

English law described "tithe" as a 10 percent contribution to a religious organization or compulsory tax to a government. Historically, tithe was paid by those who raised livestock or crops for maintenance of the church structure,

support of the poor, and support of the Bishop and the clergy.

Pennsylvania was originally a Proprietor's colony that established its own tax structure independent of the King of England. We all know how that worked out in history. The tithe box from Strode's Mill was donated and recorded as a "Wooden tithe box from Strode's Mill..." The miller was entitled to fill this box for every bag of grain he ground, which lends a new meaning to tithe, compensation for milling local farmers' grain. Early in the Proprietor's colony currency was scarce and most immigrants bartered goods and services with the Lenni Lenape Indians and each other, whenever practical. The British pound and other foreign coins were circulated and were soon supplemented in 1723 by local paper money manufactured in Ivy Mills and Philadelphia and known as Scrip.

Despite the various forms of currency and compensation, Strode's Mill continued to produce milled grain and sustain the community for over 230 years. ●